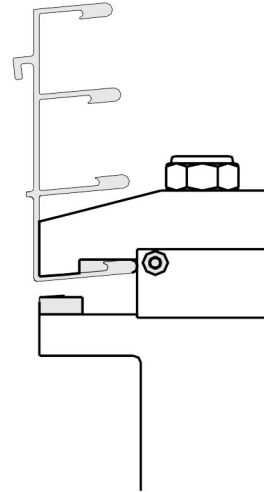
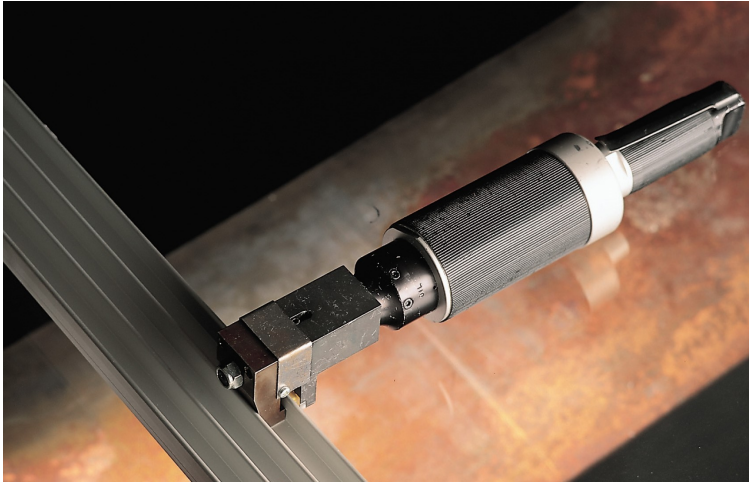




Punch for Drainage Holes in Base Rail for Glazed Patio and Balconies:

Head Dimensions (mm):



Technical Data:

Vibration Level:
 $<2.5 \text{ m/s}^2$

No Limit

Noise Level
63 dB (A)

Model	Punch Pressure	Length	Dia.	Weight	Alu-profile Thickness	Punch	Air Pressure
TUF 1681	16 kN	425mm	68mm	2.3kg	1.2mm	5 x 12 mm	7 bar

*All Dimensions in mm

We reserve the right to introduce changes to our product range and /or designs without prior notice

