

## Manual Valve, Single Acting, Pneumatic Power Pack



### Accessories:

Description	Ident. No.	Bore	End Fitting
Single Hose	TUF 1049	6mm	BSP, Metric, NTP
Twin Fused Hose	TUF 1050	6mm	BSP, Metric, NTP
Male Coupling 1/4" BSP		-	1/4" BSP
Female Coupling 1/4" BSP		-	1/4" BSP

Vibration Level:  
<2.5 m/s<sup>2</sup>

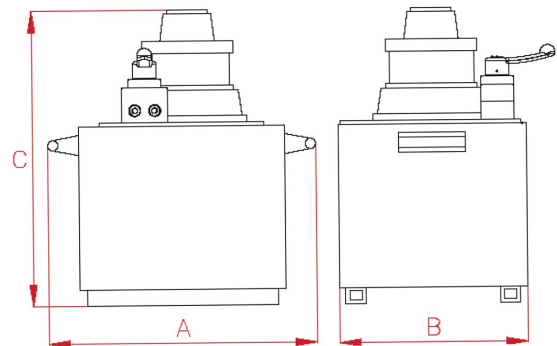
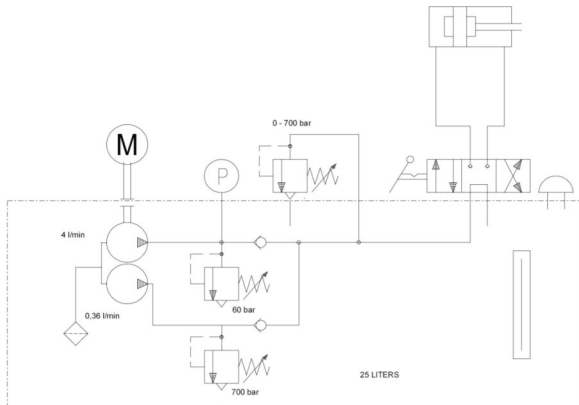


**No Limit**

### Technical Data:

Air Pressure	7 bar
Total Oil Capacity cm <sup>3</sup>	14 Litre
Working Pressure	700 BAR
Effective Oil Capacity cm <sup>3</sup>	12.5 Litre
Displacement/Pump stroke, Low-press cm <sup>3</sup>	4 Lt / Min
Displacement/Pump stroke, High-press cm <sup>3</sup>	0.36 Lt / Min

Air Consumption	30 L/s
Current	16 *
Motor	3.0 KW
Width A	368 mm
Depth B	290 mm
Height C	410 mm
Weight	32kg
Valve/ Ways	3/3 Single acting Advance/Hold/Retract



We reserve the right to introduce changes to our product range and /or designs without prior notice